



Allcastle  
Homes

**BONUS**  
**\$10,000**

COLOUR STUDIO  
VOUCHER\*

*Summer*  
**SALE**

**FIXED PRICE 7 STAR BASIX INCLUDED<sup>^</sup>**

Premier First Collection - February 2025

*Summer Days, Forever Memories  
with Allcastle Homes*



<sup>^</sup>For a limited time only.  
Ts&Cs apply.

**BONUS \$10,000  
Colour Studio  
Voucher\***

**+**

**42 Premium Upgrades**

**+**

**7 STAR BASIX Included<sup>^</sup>**

**=**

**MASSIVE  
SUMMER SAVINGS!**

\*With our Bonus Colour Studio Voucher, you can spend it at our Colour Selection Centre. It cannot be redeemed for cash, and any remaining amount is non-refundable.

<sup>^</sup>Allcastle Homes will nominate the most cost efficient method to comply which may include the inclusion of ceiling fans to bedroom and/or living areas. Design amendments and glazing reductions may be required to pass. If a different construction methodology is required additional costs may apply.

# TOTALLY FIXED PRICE 7 STAR BASIX INCLUDED<sup>^</sup>

Includes all required upgrades.

Summer Days, Forever Memories - Embrace the joy of summer and life's special moments in your new Allcastle home. For a limited time, enjoy Fixed Price 7 Star BASIX with luxury upgrades when you purchase from Allcastle's Premier First Collection.



## NO EXTRA TO PAY

Includes glazing upgrade requirements.....No more to pay!  
Includes insulation upgrade requirements.....No more to pay!  
Includes ceiling fan upgrade requirements....No more to pay!  
to meet 7 Star BASIX requirements.

Design amendments may be required to achieve a pass BASIX.





# GREEN LIVING UPGRADES



## 1. SOLAR SYSTEM

3.5kw Solar panel electric system with single phase inverter. Supplied and installed.



## 2. ROOF CEILING INSULATION

Provide top storey trussed roof ceiling insulation R6.0 to help seal and insulate the home.



## 3. BASIX WATER TANK

Upgrade the BASIX water tank to a large colour co-ordinated to gutter colour Slimline 3000L water tank.



## 4. ROOF & WALL SARKING

Provide roof and wall sarking to the exterior wall frame to seal and insulate the home.



## 5. GAS HOT WATER SYSTEMS

Provide two 26 litres ph 6.5 star instant gas hot water systems from builder's range



## 6. DAIKIN AIR-CONDITIONING

Upgrade to a Daikin superior inverter fully ducted reverse-cycle air-conditioning system (home specific).



# DESIGNER LIVING UPGRADES



## 7. GROUND FLOOR CEILING HEIGHT

Upgrade the ground floor ceiling height to a higher 2600mm (h), top storey 2440mm.



## 8. GROUND FLOOR DOOR HEIGHT

Upgrade ground floor internal flush painted door height to a high 2340mm (h).



## 9. ROBE DOOR HEIGHT

Upgrade ground floor robe flush painted door height to a high 2340mm (h).



## 10. BLACK DOOR HANDLES

Upgrade to a stylish black door handles to front door and all the interior doors from the builder's range.



## 11. DOWNLIGHTS

Provide 40 white round downlights from builder's range, fitted with warm white energy saving LED globes.



**CLIPSAL**  
by Schneider Electric

## 12. LIGHT SWITCH

Upgrade all power points and switches in the home to Clipsal Iconic range



# MODERN LIVING KITCHEN UPGRADES



## 13. OVEN

Upgrade to a SMEG Stainless Steel Thermoseal Under Bench Oven 900mm Model: SFRA9300TVX.



## 14. GAS COOKTOP

Upgrade to a SMEG Stainless Steel Burner Gas Cooktop 900mm Model: CIR93AXS3.



## 15. DISHWASHER

Upgrade to a SMEG Under Bench Dishwasher 600mm Model: DWAU6214X2



## 16. MICROWAVE

Upgrade to a SMEG 34lt Microwave Oven Stainless Steel Model: SA34MX with Trim Kit MT Model: K60X34



## 17. RANGEHOOD

Upgrade to a SMEG 900mm Concealed U/Mount Rangehood Model: PUM910X





#### 18. BLACK TAPWARE

Upgrade to stylish black tapware Mizu Drift (3/4 Star) to kitchen (1 set in total).

#### 19. KITCHEN SINK

Upgrade to square under-mount double bowl kitchen sink with polished edge from builder's range.



#### 20. PREMIUM TILE SPLASHBACK

Feature tile kitchen splashback with your choice of ceramic tiles with a \$120/sqm retail tile allowance.



#### 21. BENCHTOPS

Upgrade the 4 edges of the island bench to 60mm Caesarstone® engineered quartz in a wide range of colours from the builder's range.

Note: Includes two 60mm Caesarstone® waterfall ends (home specific) or thickened cabinetry as displayed.



#### 22. CUPBOARD DOOR PROFILE

Upgrade kitchen cupboards to handleless sharknose modern sleek look door profile to front island and cooktop run with 10mm overhang for overhead cupboards (no handles).

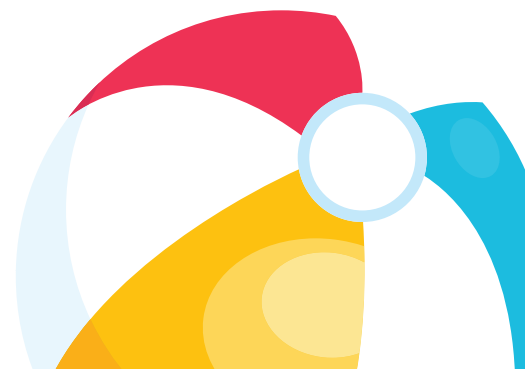
#### 23. CUPBOARD DOORS/DRAWERS

Upgrade to soft close doors and drawers to the kitchen cupboards.



#### 24. WATER POINT

Provide a cold water point at the rear of the refrigerator area, complete with a sealed cap





# MODERN LIVING BATHROOM UPGRADES



## 25. FULL HEIGHT TILING TO ENSUITE & MAIN BATHROOM

Upgrade to full height tiling to ceiling height in the ensuite main bedroom & main bathroom with your choice of ceramic tiles with a \$30/sqm retail tile allowance. Includes tiling to window reveals

## 26. SHOWER SCREEN TO ENSUITE & MAIN BATHROOM

Upgrade from framed to Semi-frameless shower screen to ensuite



## 27. STONE TOP TO VANITY TO ENSUITE & MAIN BATHROOM

Upgrade to 20mm Caesarstone® engineered quartz stone top to vanities with single porcelain bowl from the builder's range to main ensuite and main bathroom. The stone top colour to match the kitchen benchtop.

## 28. BLACK TAPWARE

Upgrade to Mizu Drift Black (3/4 Star) tapware to bathroom and ensuite (7 sets in total)

## 29. CUPBOARD DOORS TO ENSUITE & MAIN BATHROOM

Upgrade to High gloss or feature timber look handleless sharknose cupboard modern sleek doors to ensuite & main bathroom and optional 3 piece powder room if applicable.



## 30. RECESSED SOAP NICHES TO ALL BATHROOMS

Upgrade to tiled recessed soap niches to all showers in bathrooms 300mm (h) x 600mm (w) with \$30/sqm allowance for décor tiles per soap niche



## 31. TOILET UPGRADE TO ENSUITE & MAIN BATHROOM

Upgrade toilet to back-to-wall and rimless toilet with soft close seat to ensuite & main bathroom

## 32. LEVEL ENTRY TO BATHROOM

Level access into bathrooms (approximately) without floor wastes from hallway floor coverings.

## 33. TRACK GRATE TO SHOWER AREAS

Provide decorative metal track grate to shower areas of all showers





# ELEVATED LIVING UPGRADES



## 34. LAUNDRY BENCHTOP

Upgrade to 20mm Caesarstone® engineered quartz benchtop with drop-in tub and concealed hot and cold taps for washing machine. The laundry benchtop colour to match the kitchen benchtop.

## 35. LAUNDRY UNIT & MIXER TAP

Upgrade to a 1500mm long laundry unit with designer high gloss or feature timber look handleless sharknose modern sleek cupboard doors

Upgrade to Mizu Drift chrome mixer tap from builder's range

## 36. LEVEL ENTRY TO LAUNDRY

Level access into laundry (approximately) without floor wastes from hallway floor coverings.



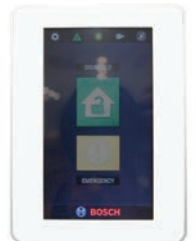
## 37. RECESSED ALFRESCO DOOR TRACK

Recess rear stacker/sliding door into concrete slab to improve egress.



## 38. TERMITE TREATED FRAME

Engineered termite treated framing is designed for protection against termites (certain parts not treated).



## 39. BOSCH ALARM SYSTEM

1 x Bosch 2000 Alarm Panel,  
1 x Touch Code Pad,  
6 x PIR Sensors,  
Internal & External Sirens,  
2 x 4 Button Remote Controls &  
controls alarm & garage door open/close.  
Supplied, fitted & installed.



# ELEVATED LIVING UPGRADES



## 40. FLOORING UPGRADES

Upgrade all ground flooring to stunning hybrid, waterproof timber-look flooring, available in a wide range of colours for all ground floor areas, including the hallway, family room, living room, media room, study, downstairs bedroom, kitchen, and meals area (if applicable), as well as the stairs, upstairs living and hallway with scotia. All upstairs bedrooms carpeted with modern range of colours, laid on superior 10mm foam underlay.



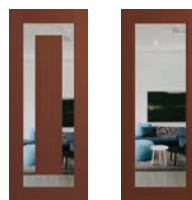
## 41. ELECTRONIC TOUCHPAD DEADBOLT

Upgrade from the standard deadbolt to digital touchpad deadbolt with convenient keyless entry



## 42. FRONT ENTRANCE DOOR

Upgrade to a stylish wide front entrance door in painted finish with clear glass from the builder's range. Models: (i) XIL1 or (ii) JST1, Size: 2340mm (h) x 1020mm (w).



(i) XIL1

(ii) JST1



## \*SUMMER SALE - PREMIER FIRST COLLECTION OFFER FEBRUARY 2025

This offer is only available to all new customers who request and pay for a quote on any Premier First Collection with Premier First Inclusion Allcastle home and accept the quotation tender within seven (7) days of presentation and proceed to contract signing as per conditions. Offer only applicable to Paid Quotes from 01/02/2025 to 28/02/2025 to homes in the Premier First Collection range with Premier First Inclusions price as per 10/06/2024 pricelist, or subsequent pricelist. This offer cannot be used in conjunction with any other offer. The Promotion is only open to participants building in Allcastle Homes build zones within NSW. This offer is strictly limited to the items as detailed in the brochure and credits are not available for any items not used. House and Land packages are excluded from this offer. For duplex, pay per dwelling. \*Allcastle Homes will nominate the most cost efficient method to comply which may include the inclusion of ceiling fans to bedroom and/or living areas. Design amendments and glazing reductions may be required to pass. If a different construction methodology is required additional costs may apply. This offer supersedes any previously published or advertised offers. Allcastle Homes has the right to substitute any items with similar products of equal value at any time and change or withdraw offers without notice. Allcastle Homes has the right to change, extend or terminate terms and conditions of promotional offers at their discretion. The prices, offer and inclusions subject to change. Design amendments may be required to achieve a pass BASIX. Our bonus colour studio voucher cannot be redeemed for cash and the remaining amount is not refundable. Note: Photos shown may depict items not included in the promotion and not supplied by Allcastle Homes. Please check with your sales consultant or refer to your tender document for details. Visit [www.allcastlehomes.com.au/terms-and-conditions](http://www.allcastlehomes.com.au/terms-and-conditions) for full details of the offer. Allcastle Homes Pty Ltd | BL39371C

# PREMIER FIRST COLLECTION UPGRADES LIST

GREEN LIVING UPGRADES		
1	Solar System	3.5kw Solar panel electric system with single phase inverter. Supplied and installed
2	Roof Ceiling Insulation	Provide top storey trussed roof ceiling insulation to help seal and insulate the home. (R6.0 for ceiling & R2.0 for external walls)
3	BASIX Water Tank	Upgrade the BASIX water tank to a large colour co-ordinated to gutter colour Slimline 3000L water tank.
4	Roof & Wall Sarking	Provide roof and wall sarking to the exterior wall frame to seal and insulate the home.
5	Gas Hot Water Systems	Provide two 26 litres ph 6.5 star gas hot water systems from builder's range.
6	Daikin Air-Conditioning	Upgrade to a Daikin superior inverter fully ducted reverse-cycle air-conditioning system (home specific)
DESIGNER LIVING UPGRADES		
7	Ground Floor Ceiling Height	Upgrade the ground floor ceiling height to a higher 2600mm (h) top storey 2440mm.
8	Ground Floor Door Height	Upgrade ground floor internal flush painted door height to a high 2340mm (h).
9	Robe Door Height	Upgrade ground floor robe flush painted door height to a high 2340mm (h).
10	Black Door Handles	Upgrade to a stylish black door handles to front door and all the interior doors from the builder's range.
11	Downlights	Provide 40 white round downlights from builder's range, fitted with warm white energy saving LED globes.
12	Light Switch	Upgrade all power points and switches in the home to Clipsal Iconic range.
MODERN LIVING UPGRADES - KITCHEN		
13	Oven	Upgrade to a SMEG Stainless Steel Thermoseal Under Bench Oven 900mm Model: SFRA9300TVX.
14	Gas Cooktop	Upgrade to a SMEG Stainless Steel Burner Gas Cooktop 900mm Model: CIR93AXS3.
15	Dishwasher	Upgrade to a SMEG Under Bench Dishwasher 600mm Model: DWAU6214X2
16	Microwave	Upgrade to a SMEG 34lt Microwave Oven Stainless Steel Model: SA34MX with Trim Kit MT Model: K60X34.
17	Rangehood	Upgrade to a SMEG 900mm Concealed U/Mount Rangehood Model: PUM910X
18	Black Tapware	Upgrade to Mizu Drift black (3/4 Star) tapware to kitchen (1 set in total).
19	Kitchen Sink	Upgrade to square under-mount double bowl kitchen sink with polished edge from builder's range.
20	Premium Tile Splashback	Feature tile kitchen splashback with your choice of ceramic tiles with a \$120/sqm retail tile allowance.
21	Benchtops	Upgrade the 4 edges of the island bench to 60mm Caesarstone® engineered quartz in a wide range of colours from the builder's range Note: Includes two 60mm Smartstone waterfall ends (home specific where displayed) or thickened cabinetry as displayed.
22	Cupboards Door Profile	Upgrade kitchen cupboards to handleless sharknose modern sleek look door profile to front island and cooktop run with 10mm overhang for overhead cupboards (no handles).
23	Cupboards Door/Drawers	Upgrade to soft close doors and drawers to the kitchen cupboards.
24	Water Point	Provide a cold water point at the rear of the refrigerator area, complete with a sealed cap
MODERN LIVING UPGRADES - BATHROOM		
25	Full Height Tiling	Upgrade to full height tiling to ceiling height in the ensuite main bedroom & main bathroom with your choice of ceramic tiles with a \$30/sqm retail tile allowance. Includes tiling to window reveals.
26	Shower Screen	Upgrade from framed to Semi-frameless shower screen to ensuite & main bathroom.
27	Stone Top to Vanity	Upgrade to 20mm Caesarstone® engineered quartz stone top to vanities with single porcelain bowl from the builder's range to ensuite bathroom and main bathroom. The stone top colour to match the kitchen benchtop.
28	Black Tapware	Upgrade to Mizu Drift black (3/4 Star) tapware to bathroom and ensuite (7 sets in total).
29	Cupboard Doors	Upgrade to High gloss or feature timber look handleless sharknose cupboard modern sleek doors to ensuite bathroom & main bathroom and optional 3 piece powder room if applicable.
30	Recessed Soap Niches	Upgrade to tiled recessed soap niches to all showers in bathrooms 300mm (h) x 600mm (w) with \$30/sqm allowance for décor tiles per soap niche.
31	Toilet Upgrade	Upgrade toilet to back-to-wall and rimless toilet with soft close seat to ensuite bathroom & main bathroom.
32	Level Entry to Bathroom	Level access into bathrooms (approximately) without floor wastes from hallway floor coverings.
33	Track Grate to Shower Areas	Provide decorative metal track grate to shower areas of all showers.
ELEVATED LIVING UPGRADES		
34	Laundry Benchtop	Upgrade to 20mm Caesarstone® engineered quartz benchtop with drop-in tub and concealed hot and cold taps for washing machine. The laundry benchtop colour to match the kitchen benchtop.
35	Laundry Unit & Mixer Tap	Upgrade to a 1500mm long laundry unit with designer high gloss or feature timber look handleless sharknose modern sleek cupboard doors, Upgrade to Mizu Drift chrome mixer tap from builder's range.
36	Level Entry to Laundry	Level access into laundry (approximately) without floor wastes from hallway floor coverings.
37	Recessed Alfresco Door Track	Recess rear stacker/sliding door into concrete slab improve egress.
38	Termite Treated Frame	Engineered termite treated framing is designed for protection against termites (certain parts not treated).
39	Bosch Alarm System	1 x Bosch 2000 Alarm Panel, 1 x Icon Push button codepad, 4 x PIR Sensors, 2 x 4 button remotes, Controls alarm & garage door open/close, 1 x Internal Siren & 1 x External Siren. Supplied, fitted & installed.
40	Flooring Upgrades	Upgrade all ground flooring to stunning hybrid, waterproof timber-look flooring, available in a wide range of colours for all ground floor areas, including the hallway, family room, living room, media room, study, downstairs bedroom, kitchen, and meals area (if applicable), as well as the stairs, upstairs living and hallway with scotia. All upstairs bedrooms carpeted with modern range of colours, laid on superior 10mm foam underlay.
41	Electronic Touchpad Deadbolt	Upgrade from the standard deadbolt to digital touchpad deabolt with convenient keyless entry
42	Front Entrance Door	Upgrade to a stylish wide front entrance door in painted finish with clear glass from the builder's range. Models: (i) XIL1 OR (ii) JST1. Size: 2340mm (h) x 1020mm (w)
43	<b>Bonus Colour Studio Voucher*</b>	\$10,000 worth voucher to spend in our Colour Selection Centre for your home upgrades





Allcastle  
Homes

*Summer*  
**SALE**

**FIXED PRICE 7 STAR BASIX INCLUDED<sup>^</sup>**

Premier First Collection - February 2025

*Make it Home*



**1300 255 999**  
**allcastlehomes.com.au**



Allcastle Homes Pty Ltd | BL39371C